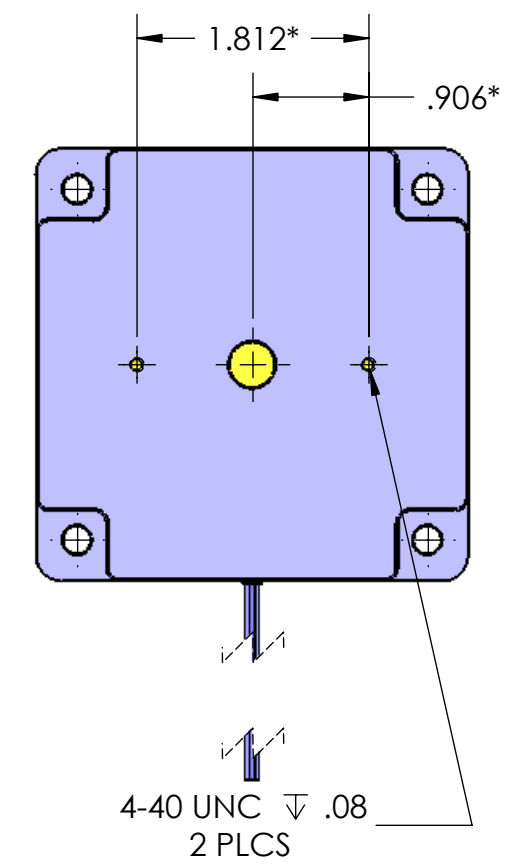
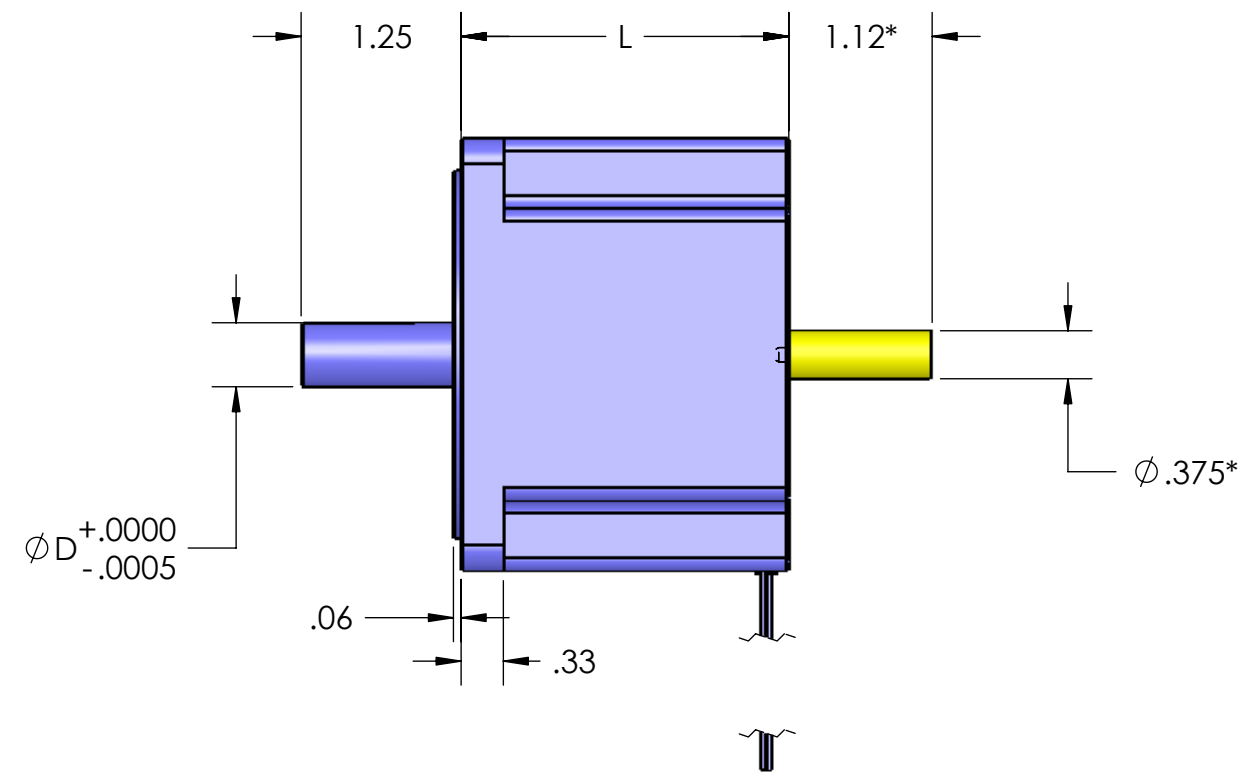
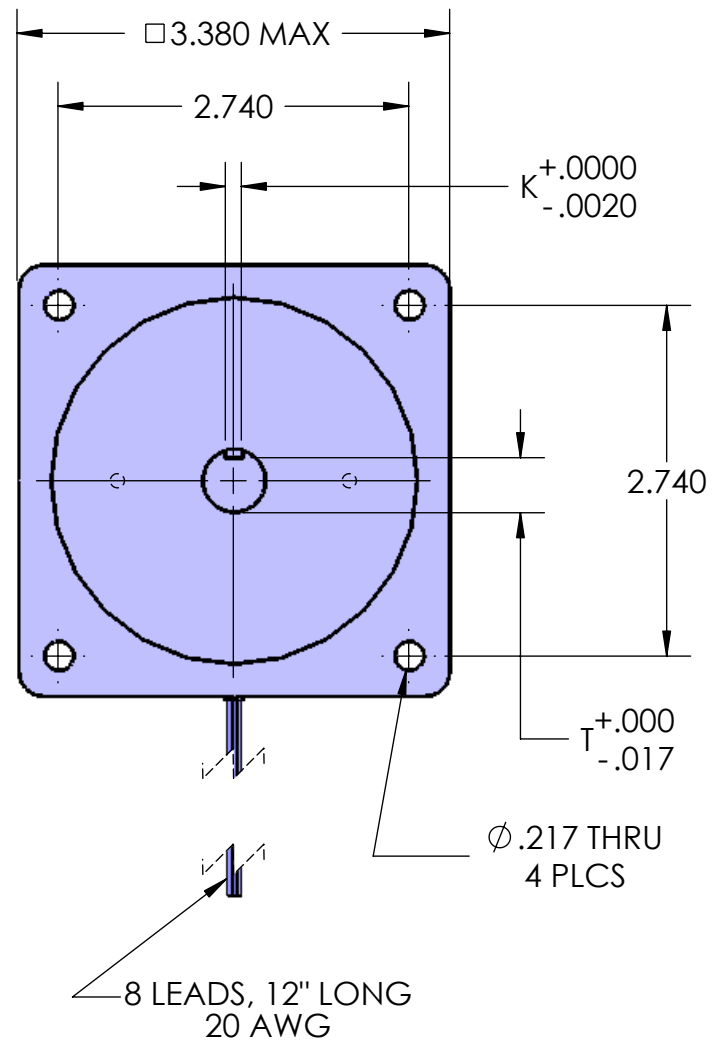


8 7 6 5 4 3 2 1

D
C
B
A

D
C
B
A




8 LEADS, 12" LONG
20 AWG

* THESE DIMENSIONS REFER TO DOUBLE SHAFT VERSION ONLY

PART NUMBER	"D" DIMENSION	"K" DIMENSION	"T" DIMENSION	"L" DIMENSION
US34T210X-8LX	.5000	.1250	.430	2.56
US34T220X-8LX	.5000	.1250	.430	3.15
US34T230X-8LX	.5000	.1250	.430	4.65
US34T240X-8LX	.6250	.1875	.518	6.14

PROPRIETARY AND CONFIDENTIAL
THE INFORMATION CONTAINED IN THIS DRAWING IS THE SOLE PROPERTY OF QUATRO AUTOMATION GROUP INC. ANY REPRODUCTION IN PART OR AS A WHOLE WITHOUT THE WRITTEN PERMISSION OF QUATRO AUTOMATION GROUP INC. IS PROHIBITED.

UNLESS OTHERWISE SPECIFIED:		NAME	DATE
DIMENSIONS ARE IN INCHES		DRAWN	
TOLERANCES:		CHECKED	
FRACTIONAL $\pm 1/32$		ENG APPR.	
ANGULAR: MACH $\pm .5^\circ$ BEND $\pm 1^\circ$		MFG APPR.	
TWO PLACE DECIMAL $\pm .03$		Q.A.	
THREE PLACE DECIMAL $\pm .005$		COMMENTS:	
INTERPRET GEOMETRIC TOLERANCING PER:			
MATERIAL			
FINISH			
NEXT ASSY	USED ON		
APPLICATION		DO NOT SCALE DRAWING	



23011 MOULTON PARKWAY, SUITE J1
LAGUNA HILLS, CA 92653
949-588-0581

TITLE: **US34T Series Motor**

SIZE	DWG. NO.	REV
B	AA4291	

SCALE: 1:1.5 WEIGHT: SHEET 1 OF 1

8 7 6 5 4 3 2 1